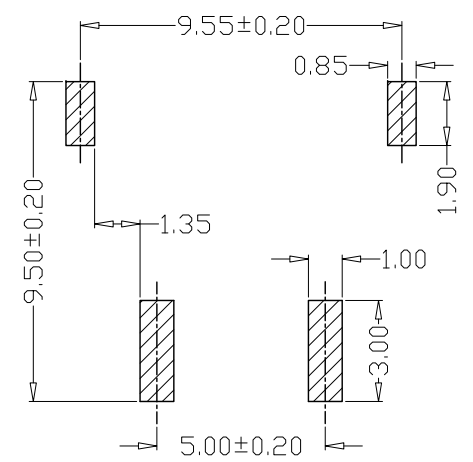
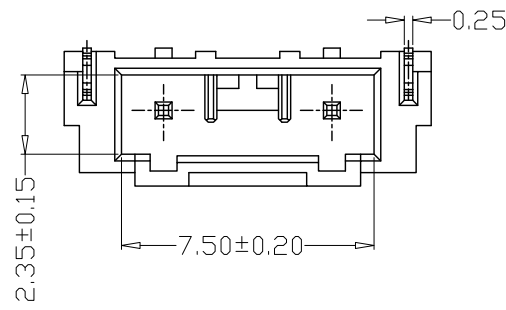
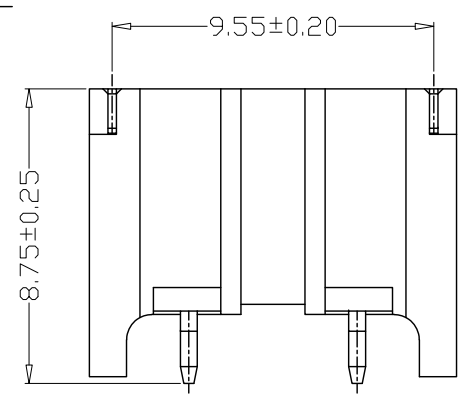
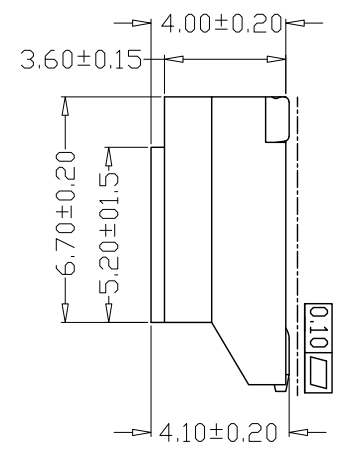
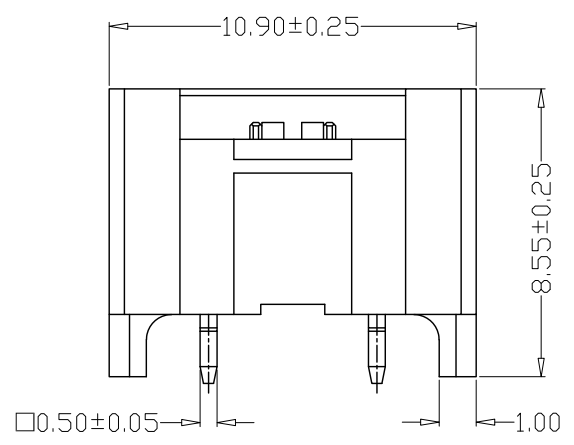


版本 REV.	日期 DATE	ECN NO.	变更内容 DESCRIPTION	制图 DRAWN

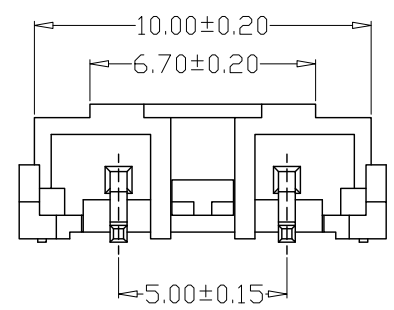
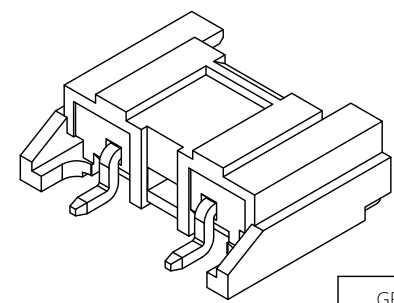


PCB LAYOUT



SPECIFICATIONS

- Current Rating: 3A AC, DC
- Voltage Rating: 250V AC, DC
- Temperature Range: -25°C~+85°C
- Contact Resistance: 20mΩ Max
- Insulation Resistance: 1000MΩ Min
- Withstanding Voltage: 1000V AC/minute
- Material: Wafer LCP, UL94V-0
PIN Brass Tin-plated
Solder tad Brass Tin-plated



GENERAL TOLERANCE		制图 Mapping	张迎春 2022、09、17		料号 PART NO.	B25004-2AWB		版本 REV.	A	
X.±0.25	X.°±2°	审核 Audit	钱岳生 2022、09、17		品名 TITLE	25029卧贴 WAFER SMT TYPE		页次 SHEET	1/1	
.X±0.25	.X°±1°	核准 Approved	张名 2022、09、18		客户料号 CUTM. NO.					
.XX±0.15	.XX°±0.5°	单位 Units	mm	比例 SCALE						
.XXX±0.10	.XXX°±0.5°									

乐清市宏一电子有限公司
Yueqing Hongyi Electronics Co., Ltd